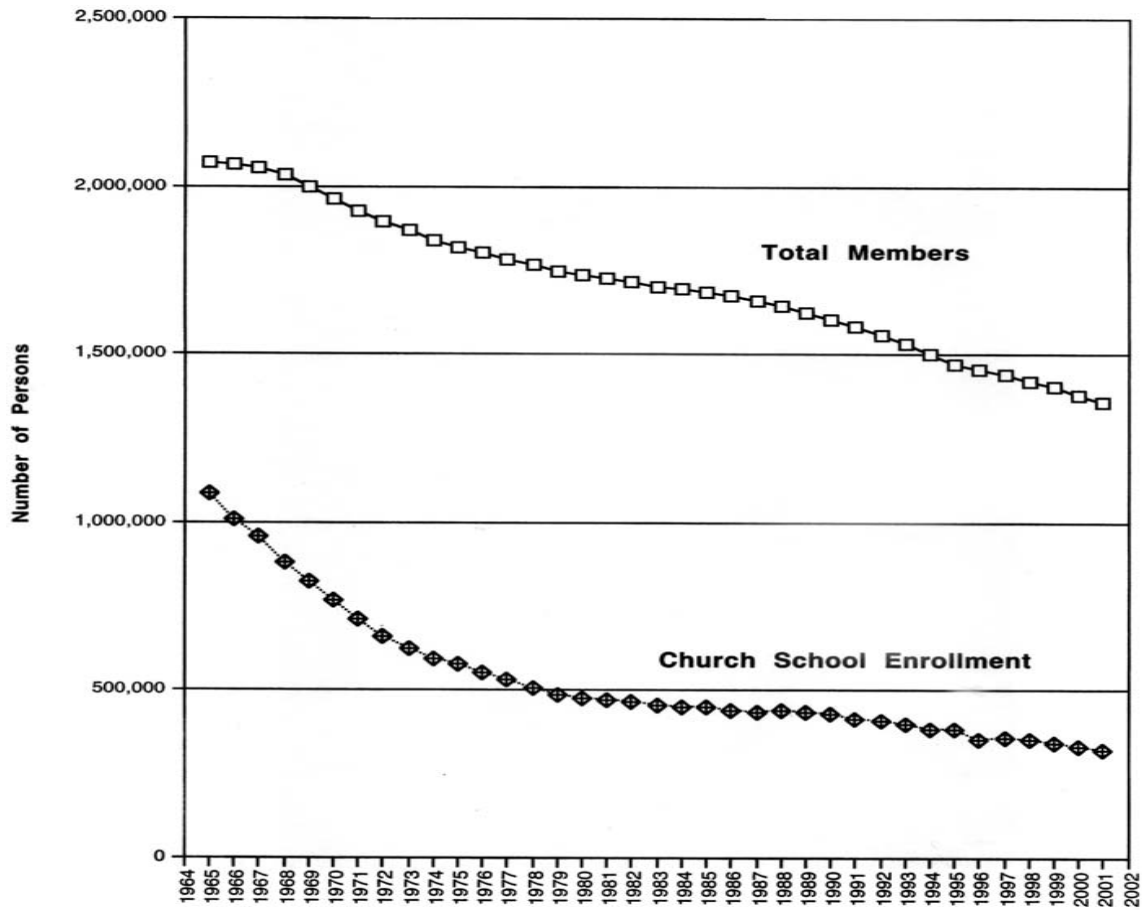
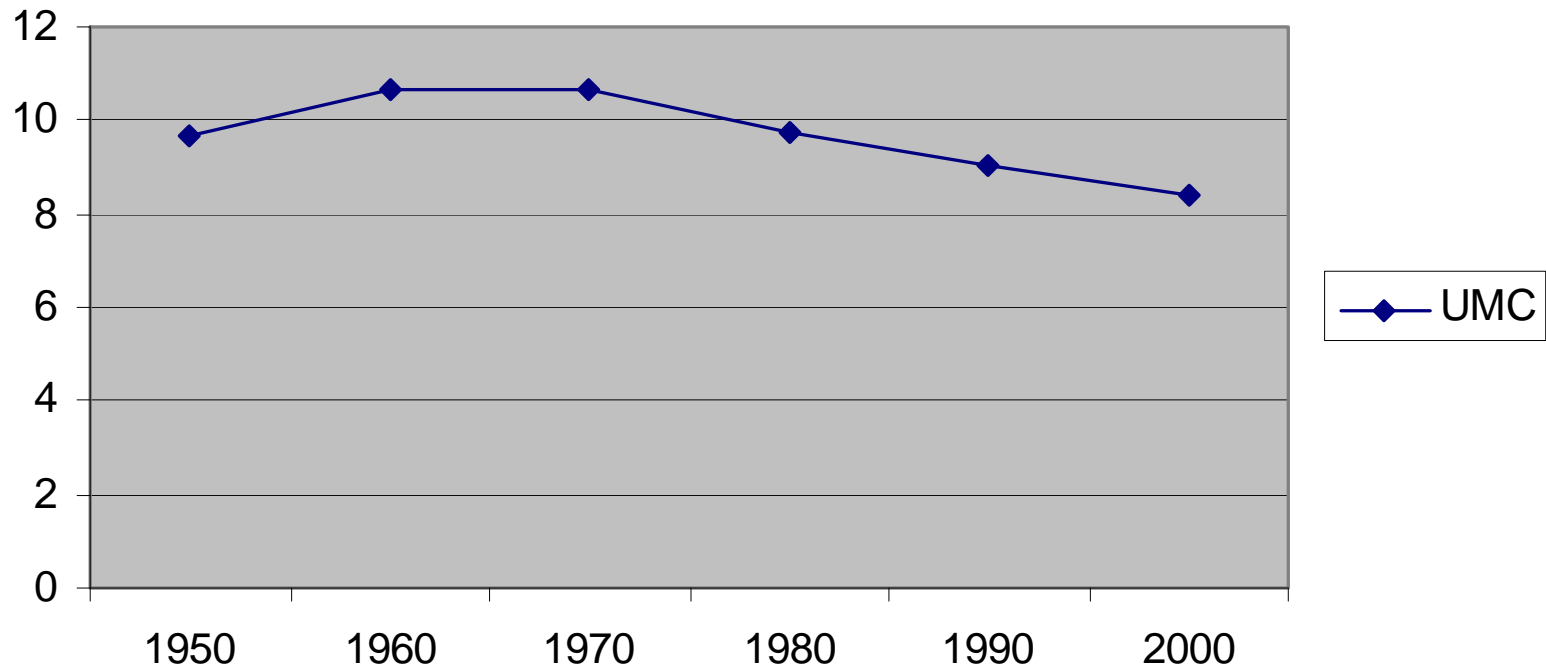


Figure 1.02

UCC Membership and Church School Enrollment: 1965-2001



UMC



DOC

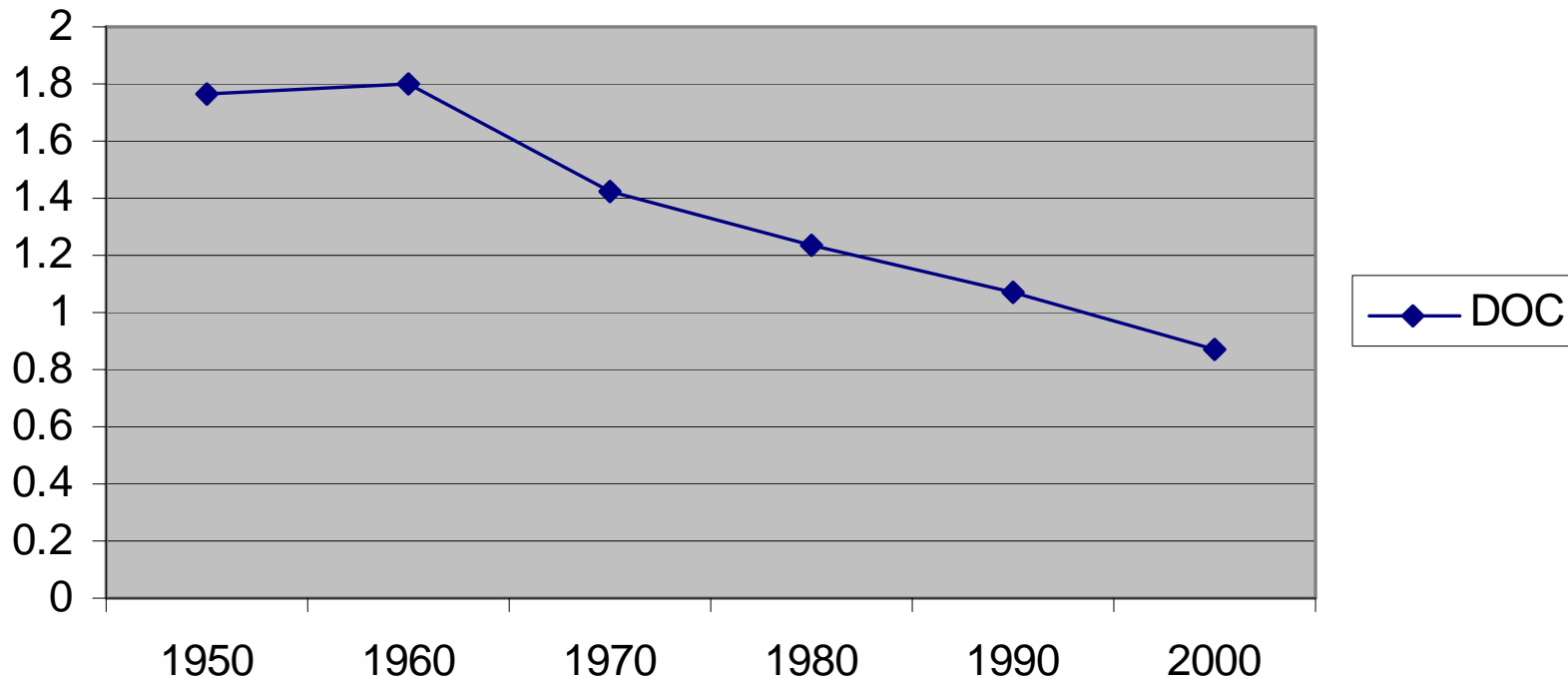


TABLE 20.—POPULATION OF CITIES HAVING AT LEAST 8,000 INHABITANTS, AND OF COUNTRY DISTRICTS: 1900, 1890, AND 1880.

	POPULATION.				PER CENT OF TOTAL POPULATION.			PER CENT OF INCREASE.	
	1900	1890 ¹	1890 ²	1880	1900	1890	1880	1890 to 1900	1880 to 1890
Continental United States	75,994,575	62,947,714	62,622,250	50,155,783	100.0	100.0	100.0	20.7	24.9
Cities having at least 8,000 inhabitants	24,992,199	18,244,625	18,244,625	11,388,661	32.9	29.0	22.7	37.0	60.2
Country districts	51,002,376	44,703,089	44,377,625	38,767,122	67.1	71.0	77.3	14.1	14.5

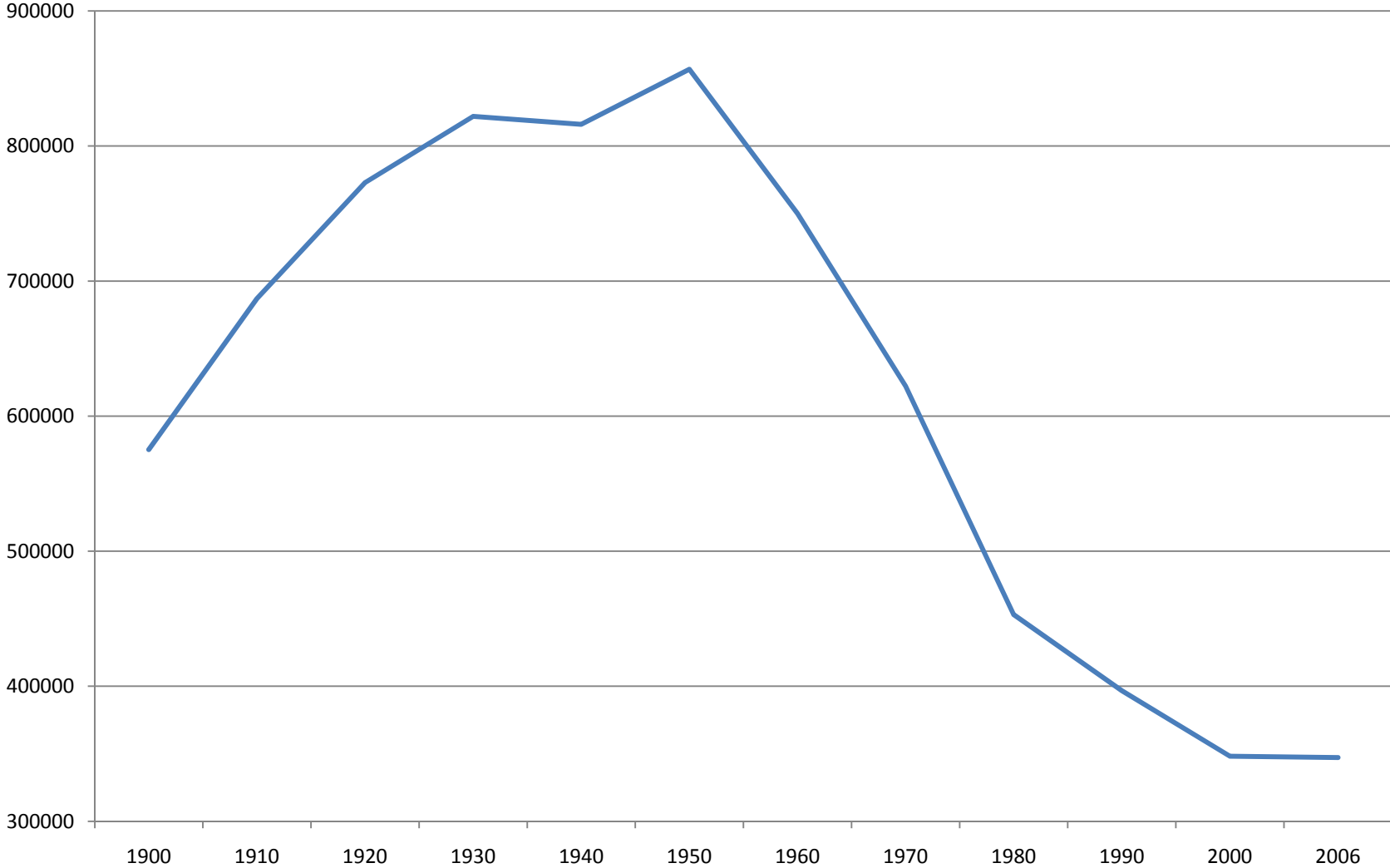
¹ Includes population of Indian Territory and Indian reservations.

² Excludes population of Indian Territory and Indian reservations.

Urban/rural and metropolitan/nonmetropolitan population	Number	Percent
United States	281,421,906	100
URBAN AND RURAL		
Urban	222,360,539	79
Rural	59,061,367	21
INSIDE AND OUTSIDE METROPOLITAN AREA		
In metropolitan area	225,981,679	80.3
In central city	85,401,127	30.3
Not in central city	140,580,552	50

Source: U.S. Census Bureau, Census 2000 Summary File 1, Matrix P1.

St. Louis City Population



Figures from U.S.Census Bureau